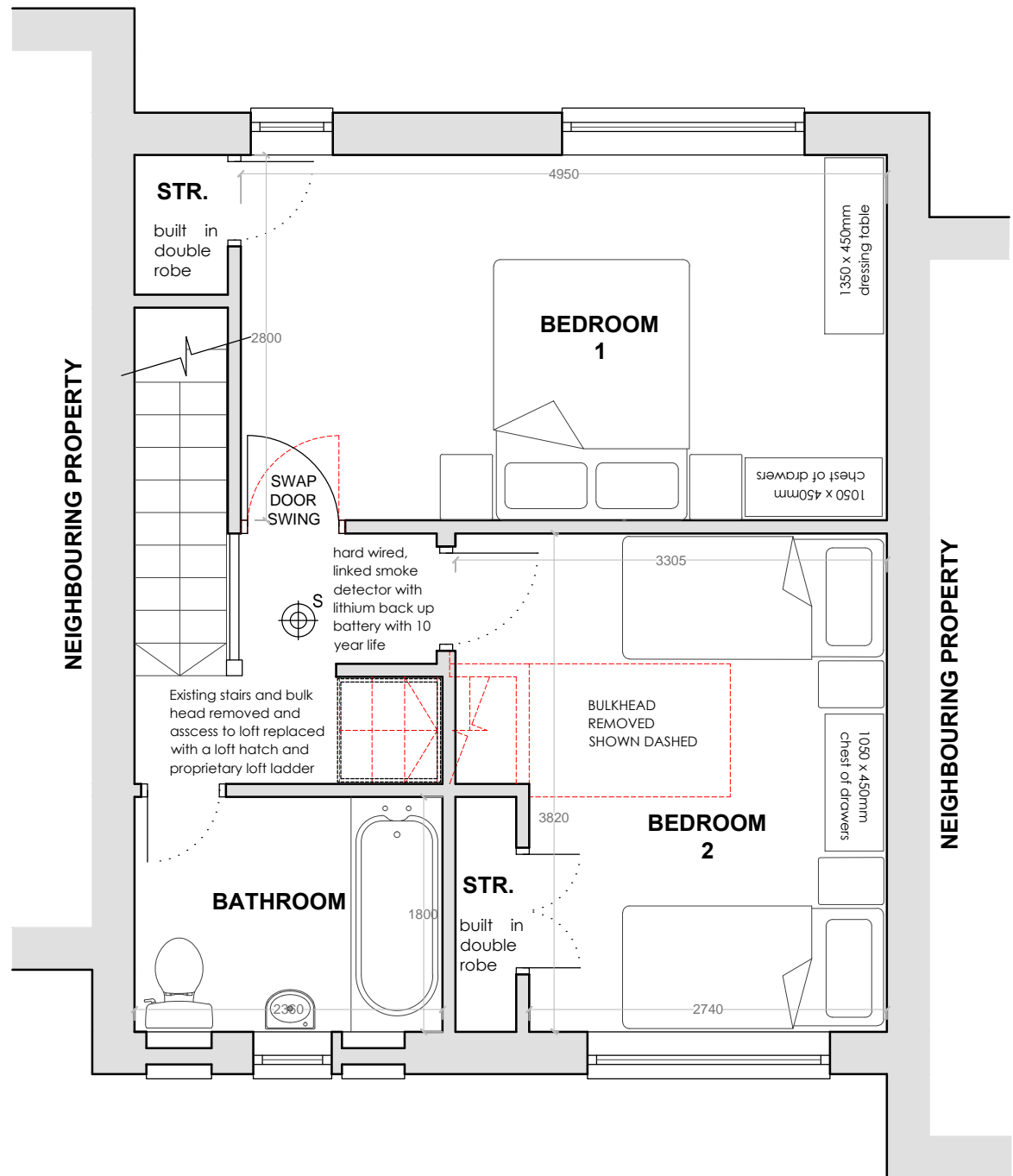


**Bathroom & WC Provision**

- All dwellings should have a bathroom with a bath, washhand basin and wc. (the wc. may be separate). In circumstances where it is practically impossible to provide a bath a shower will be acceptable.
- All dwellings provided with a bath should also have a shower.
- In dwellings with more than one bedroom it should be possible to reach the bathroom without passing through a bedroom.
- Bathrooms should not be more than one storey away from the bedrooms

**Two person bedrooms**

- one bedroom should be able to contain a double bed and further large bedrooms 2 single beds or a double bed;
- a bedside table;
- a large chest of drawers (this may be in an adjacent box room or on the landing if it does not impede circulation space);
- a dressing table;
- one double or two single wardrobes (free standing or built in).



PROPOSED FIRST FLOOR PLAN