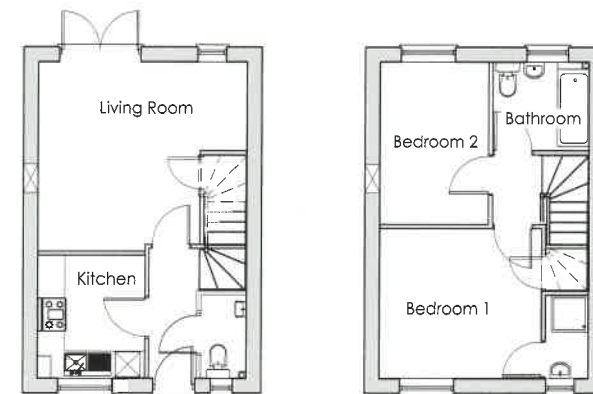


THE KENDAL

Two Bedroom Home

Beautifully designed for easy living, "The Kendal" features a spacious living room, quality fitted kitchen, downstairs cloakroom and one large double bedroom and one spacious single bedroom.

High value wall, roof and ground floor insulation plus a high efficiency gas boiler and double glazing throughout help reduce running costs. Also uPVC fascia bargeboards, doors, windows and soffits contribute to low maintenance - for easy living.



ROOM SIZES

	Metric	Imperial
Lounge	4.615m x 4.085m (max)	15'1" x 13'4" (max)
Kitchen	2.720m x 2.135m	8'10" x 7'0"
Bedroom 1	3.56m x 3.27m	11'8" x 10'9"
Bedroom 2	3.580m x 2.360m	11'8" x 7'8"

For more information call **01978 291441** or visit www.gowerhomes.co.uk