

ANWYL
thoughtful homes



the chester

3 bed semi-detached

An attractive home, perfect for first-time buyers. Key features include an *open plan* kitchen diner and master bedroom with en-suite.

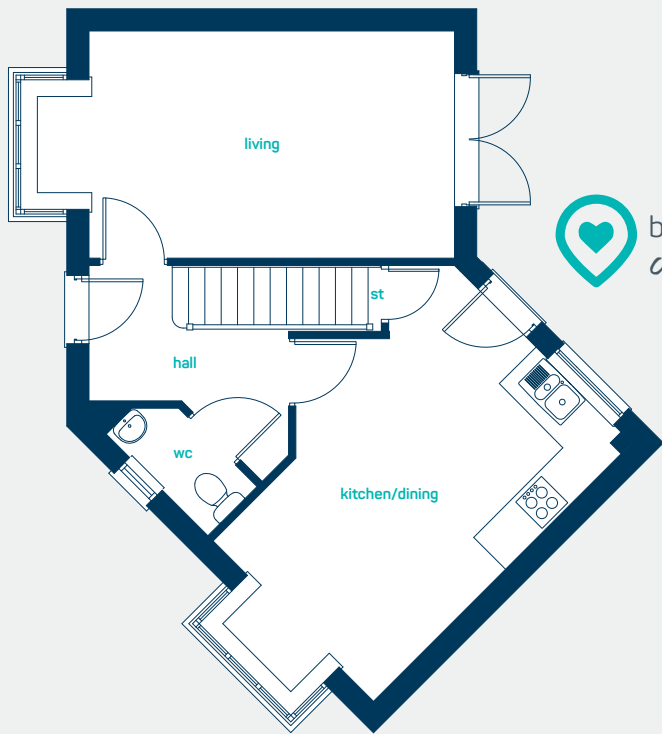
www.anwylhomes.co.uk

got
questions?

call...

**03300
244 944**

everything considered.

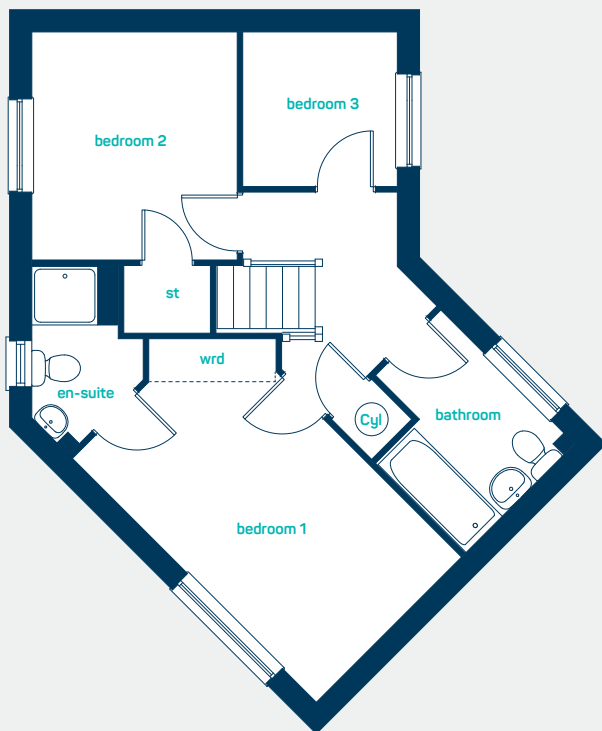


 beautiful
open plan living

ground floor

kitchen/dining 16'3" x 10' 0"
living room 16' 3" x 10' 0"
cloaks 7' 4" x 2' 11"

kitchen/dining 4.94m x 3.05m
living room 4.94m x 3.05m
cloaks 2.24m x 0.9m



first floor

bedroom 1 15' 4" x 9' 1"
en-suite 6' 9" x 3' 9"
bedroom 2 10' 1" x 9' 2"
bedroom 3 6' 10" x 6' 10"
bathroom 8' 4" x 6' 10"

bedroom 1 4.67m x 2.76m
en-suite 2.06m x 1.14m
bedroom 2 3.07m x 2.79m
bedroom 3 2.07m x 2.07m
bathroom 2.55m x 2.07m

get in
touch...
**03300
244 944**

the chester

3 bed semi-detached

www.anwylhomes.co.uk

This is a computer generated image of the Chester, elevation treatment may vary. Room sizes are approximate. Plots may be handed and any garages may be single or double. Kitchen and bathroom layouts are indicative. These plans are correct at the time of going to press, but may be subject to change during construction. Please ensure that you check for specific plot details.

everything considered.