

# The Rufford

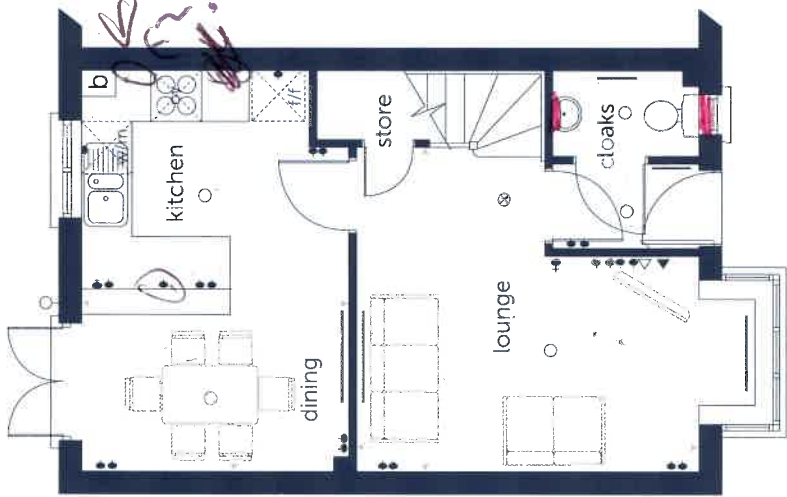
Three bedroom home



# The Rufford at Bluestone Meadow

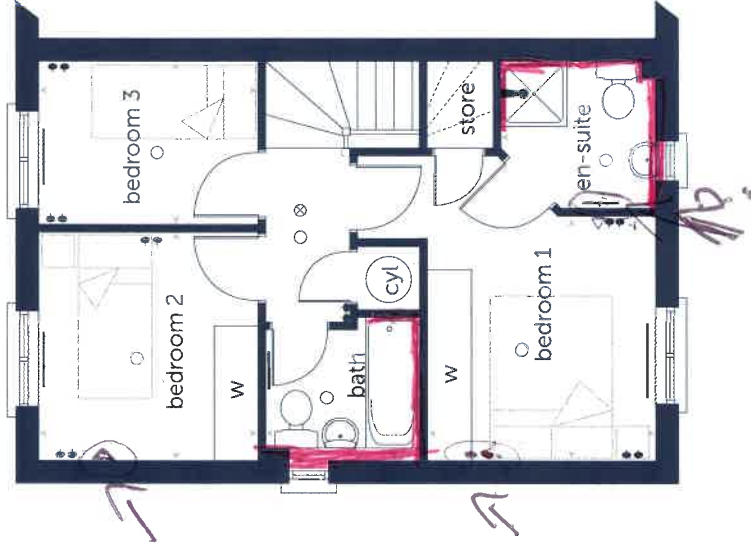
Three bedroom home

*Standard Tiling*



## Ground Floor

Lounge (exc bay)	3920* x 4195mm	12'10"* x 13'9"
Kitchen/Dining	4825* x 3260mm*	15'9"* x 10'8"*
Cloaks	1760 x 960mm*	5'9" x 3'1"



## First Floor

Bedroom 1	3747* x 2772mm†	12'3"* x 9'1"†
En-suite	1600* x 1760mm*	5'2"* x 5'9"*
Bedroom 2	2757 x 2690mm	9'0" x 8'10"
Bedroom 3	2000 x 2690mm	6'7" x 8'10"
Bathroom	1900 x 1900mm	6'2" x 6'2"

\*maximum dimensions † minimum dimensions

- ⊗ smoke detector
- double socket
- ceiling light
- ▲ telephone point
- ⊞ radiators
- boiler
- St cupboard
- OV built under oven
- ⊞ heat detector
- ⊞ outside light
- ⊞ e/s en suite
- ⊞ fridge freezer space
- ⊞ washing machine space

Items shown in this key may be subject to change, and positions could vary from those indicated on this floorplan. Please refer to Sales Advisor for details of your selected plot.

Computer generated image shown overlaid. External finishes, landscaping and configuration may vary from plot to plot. Please refer to Sales Advisor for further details. All dimensions are approximate and should not be used for carpet sizes, appliance spaces, or furniture. Furniture not to scale and all positions are indicative. Wardrobes are shown to suggest position only, and are not included as standard unless otherwise stated. We operate a policy of continuous improvement and individual features such as kitchen and bathroom layouts, doors, windows, garages and elevational treatments may vary from time to time. Consequently these particulars should be treated as general guidance only and do not constitute a contract, part of a contract or a warranty.