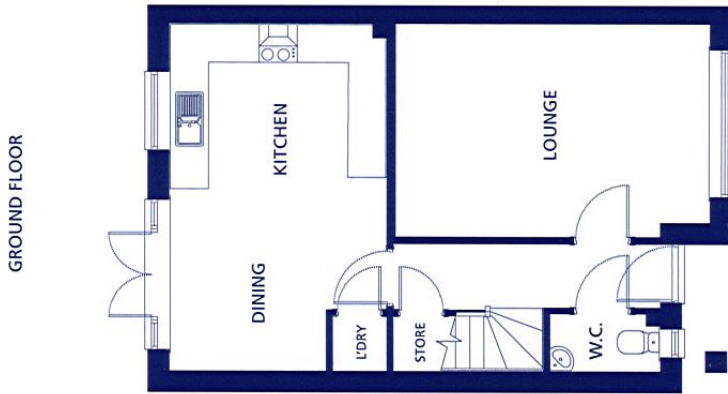


# FLOOR PLAN

## GROUND FLOOR



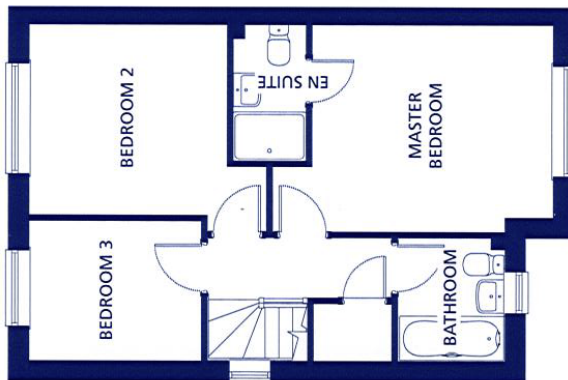
RENT FROM

**£750 PCM**

 (01745) 335690

 [HAWWS@CARTREFICONWY.ORG](mailto:HAWWS@CARTREFICONWY.ORG)

## FIRST FLOOR



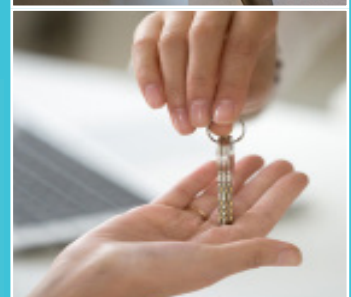
[WWW.HAWWS.ORG.UK](http://WWW.HAWWS.ORG.UK)

### Ground Floor

Kitchen/Dining	5.46m x 3.43m	17'10" x 11'3"
Lounge	4.95m x 3.34m	16'2" x 11'0"
W.C.	1.74m x 0.90m	5'7" x 2'9"

### First Floor

Master Bedroom	3.92m x 3.37m	12'9" x 11'0"
En Suite	2.20m x 1.20m	7'2" x 3'9"
Bedroom 2	3.86m x 3.10m	12'7" x 10'2"
Bedroom 3	2.79m x 2.28m	9'1" x 7'5"
Bathroom	2.00m x 1.74m	6'6" x 5'7"



Please note the images shown are for illustrative purposes only, and no information contained within this document will form any part of a contract. All measurements given are approximate, and the building materials (brickwork, render and roof tiles) used for each individual plot may differ in colour and arrangement from these images.. Homes may be 'handed' (mirror image) versions of those shown, and properties may be constructed as detached, semi-detached or terraced properties.