



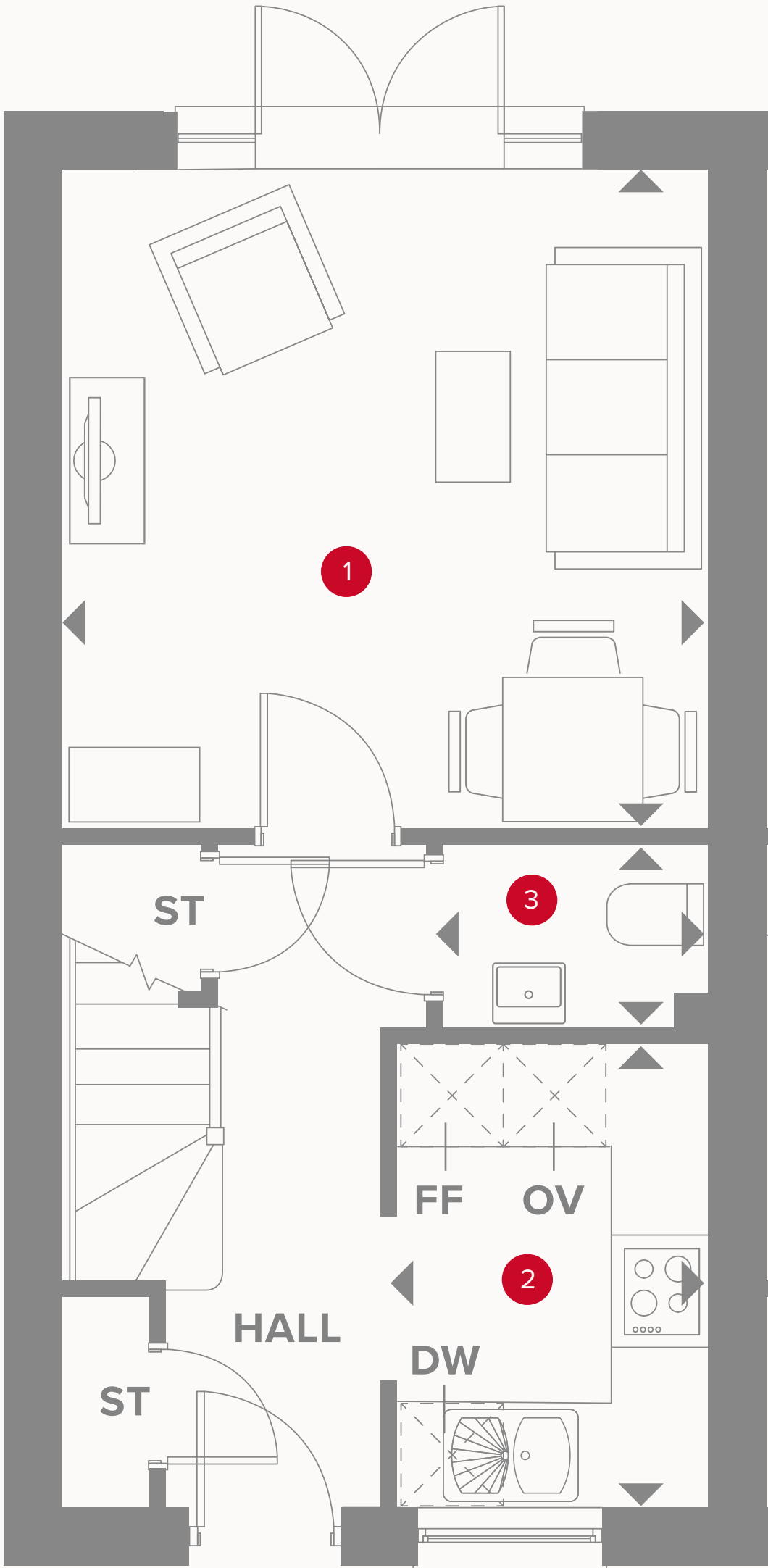
HERITAGE

- REDROW -

THE AVON MID

TWO BEDROOM HOME





THE AVON MID GROUND FLOOR

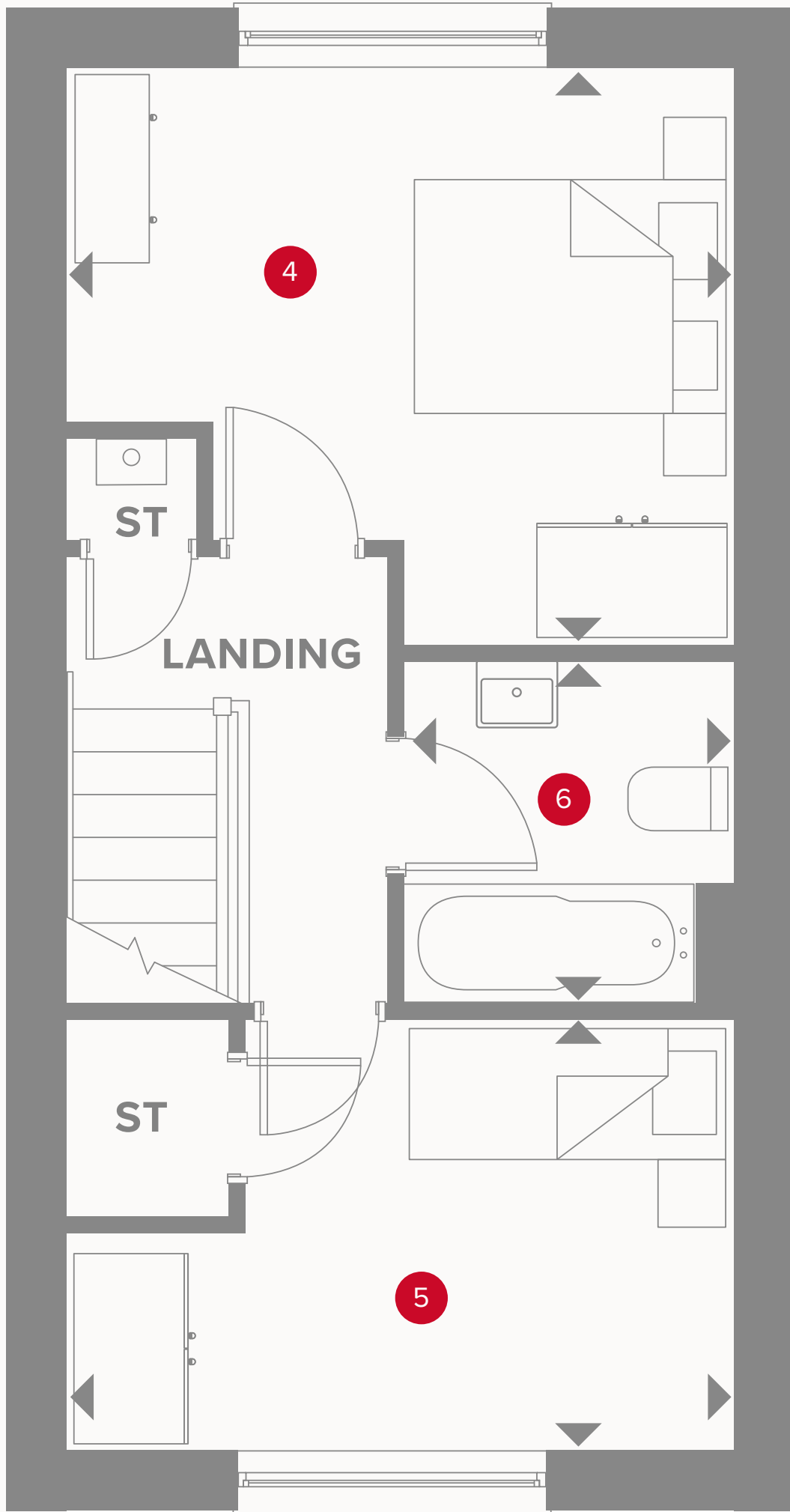
1	Lounge/Dining	12'10" x 12'7"	3.95 x 3.86 m
2	Kitchen	9'1" x 6'2"	2.78 x 1.89 m
3	Cloaks	5'3" x 3'6"	1.62 x 1.11 m



KEY

- Hob
- OV** Oven
- FF** Fridge/freezer
- DW** Dishwasher space

- Dimensions start
- ST** Storage cupboard



THE AVON MID FIRST FLOOR

4	Bedroom 1	12'7" x 10'10"	3.86 x 3.34 m
5	Bedroom 2	12'7" x 8'2"	3.86 x 2.50 m
6	Bathroom	6'6" x 6'4"	2.00 x 1.95 m



- KEY**
- ◀ Dimensions start
 - ST** Storage cupboard

**CONSUMER
CODE FOR
HOME BUILDERS**

www.consumercode.co.uk

Customers should note this illustration is an example of the Avon Mid house type. All dimensions indicated are approximate and the furniture layout is for illustrative purposes only. Homes may be 'handed' (mirror image) versions of the illustrations, and may be detached, semi-detached or terraced. Materials used may differ from plot to plot including render and roof tile colours. Detailed plans and specifications are available for inspection for each plot at our Sales Centre during working hours and customers must check their individual specifications prior to making a reservation.